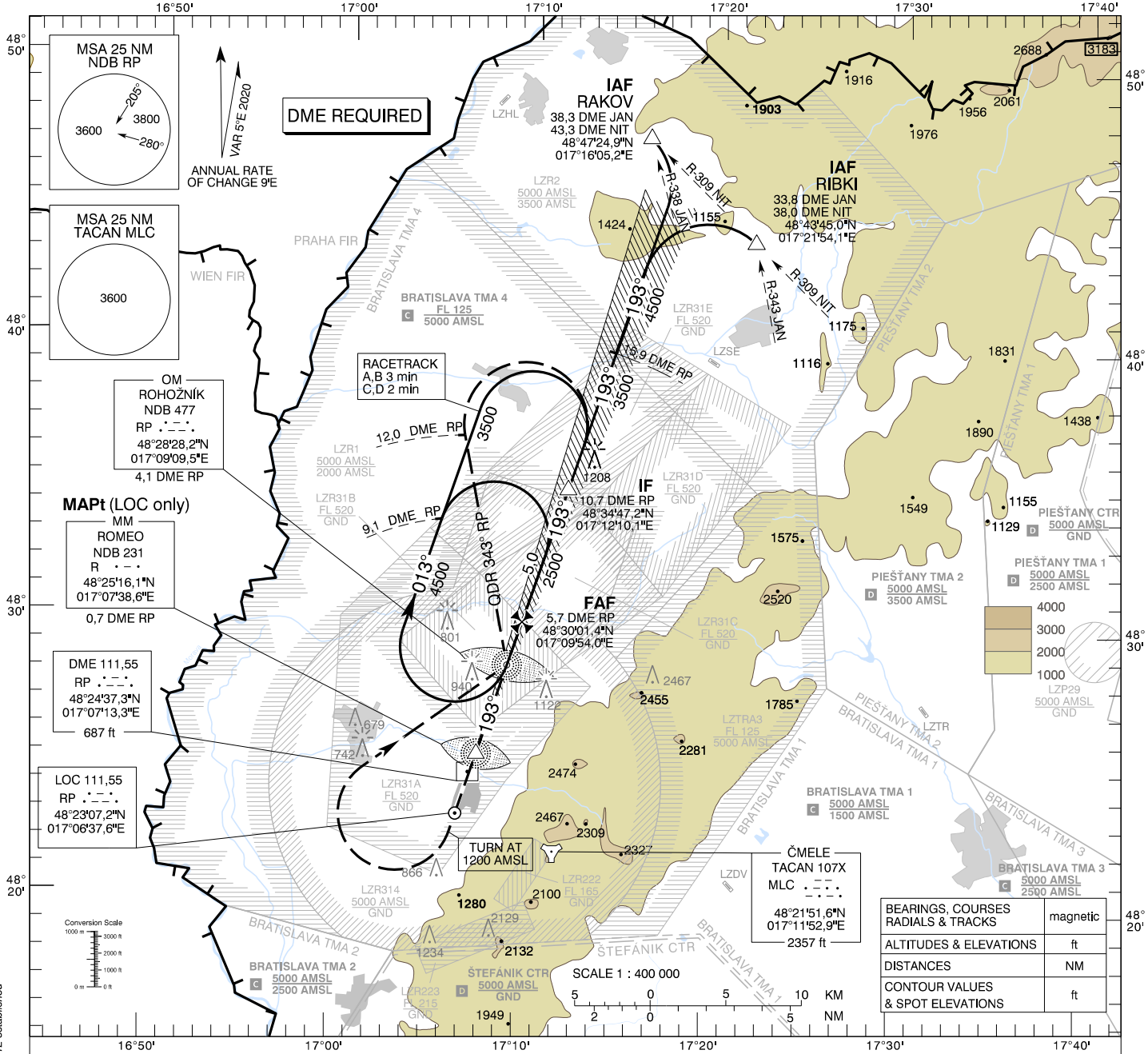


**INSTRUMENT
APPROACH
CHART - ICAO**

TRANSITION ALTITUDE
10 000 ft
AD ELEV 689 - 25 hPa
THR RWY 19 ELEV 686,4 - 25 hPa

MALACKY RADAR 120,750 (259,625)
MALACKY TOWER 129,575 (120,750)

MALACKY (LZMC)
ILS CAT I or LOC RWY 19
ACFT CAT A/B/C/D



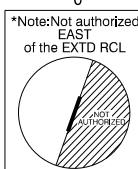
MISSED APPROACH

Climb STRAIGHT AHEAD, at 1200 AMSL turn RIGHT to NDB RP, climbing to 3500 AMSL. At NDB RP turn LEFT to track 343° (QDR 343° RP), at 12 DME RP turn RIGHT to join the hold or initiate another approach. MAX IAS 185 kt. No turn before MM.

ILS RDH 56,8

THR RWY 19 ELEV 686,4 - 25 hPa
NM to/from THR RWY 19

| OCA (OCH) | ASC | A | B | C | D |
|------------------------|-------|-------------------|------------|------------|-------------|
| Straight - in Approach | CAT I | 2,5% ft 943 (257) | 955 (269) | 963 (277) | 974 (288) |
| | LOC | 4,0% ft 918 (232) | 930 (244) | 938 (252) | 949 (263) |
| Circling (* see Note) | | 1110 (421) | | | |
| | | ft 1120 (431) | 1190 (501) | 1650 (961) | 1810 (1121) |
| VIS | | m 1800 | 2800 | 3600 | 4600 |



| DME RP | NM | 5,0 | 4,0 | 3,0 | 2,0 | 1,0 |
|-----------|----|------|------|------|------|------|
| ALTITUDES | ft | 2275 | 1957 | 1638 | 1320 | 1001 |

| Ground speed | kt | 70 | 90 | 100 | 120 | 140 | 160 |
|------------------------|---------|------|------|------|------|------|------|
| FAF - MAPt (5,0 NM) | min:sec | 4:17 | 3:20 | 3:00 | 2:30 | 2:09 | 1:53 |
| Rate of descent (5,2%) | ft/mh | 372 | 478 | 531 | 637 | 743 | 849 |

Timing not authorized for defining the MAPt.

CHANGES: LZR131A and LZR131B withdrawn, new LZR31A, LZR31B, LZR31C, LZR31D, LZR31E established